

Service Manual

Living Fan
P30KH



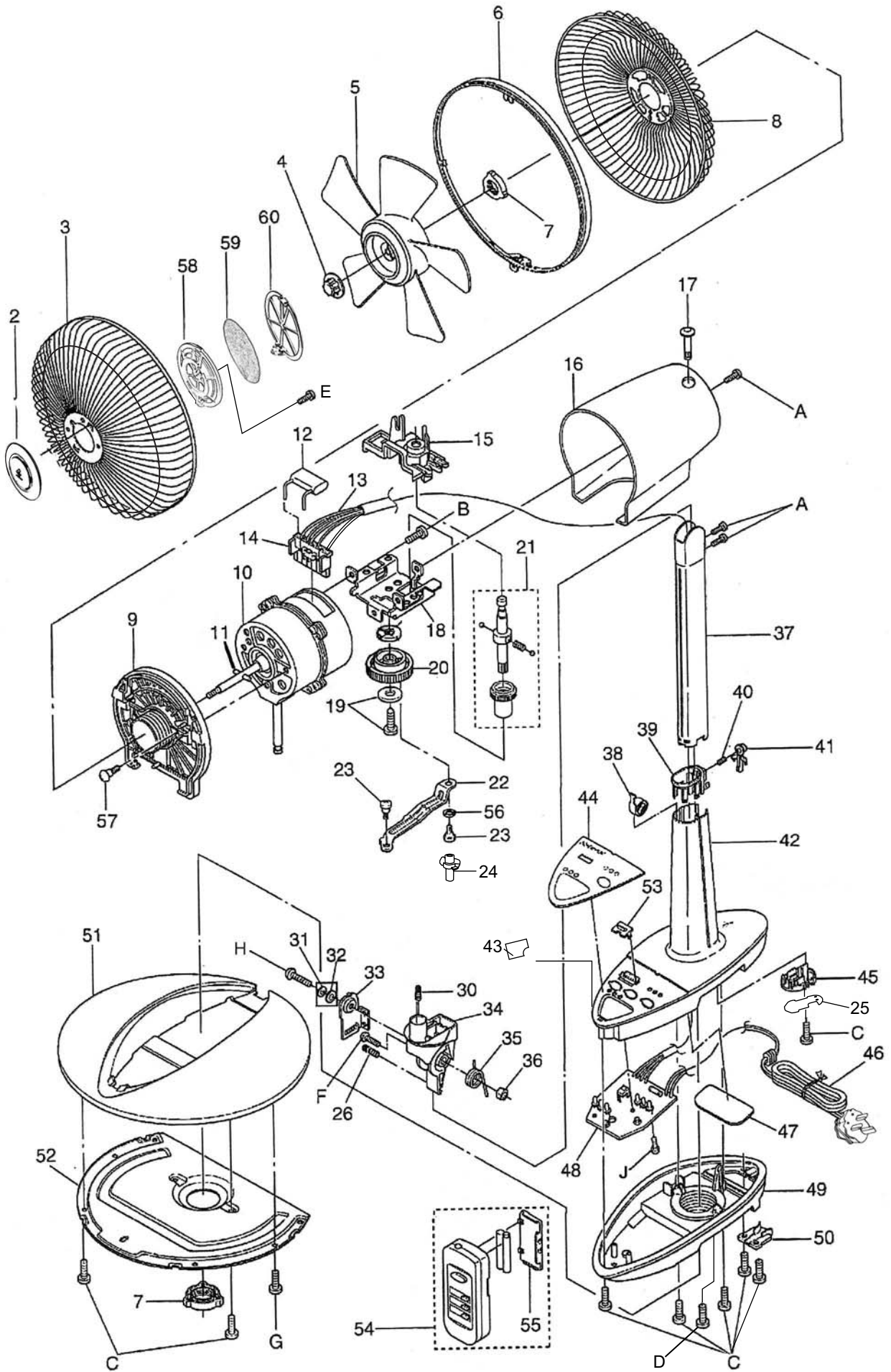
SPECIFICATION

MODEL	AC220 / 230V 50Hz					
	WATTAGE		RPM		AIR VELOCITY	AIR DELIVERY
	Low	High	Low	High	m/min	m ³ /min
P30KH	19-26	37-40	835-875	1100-1135	200-209	50-55

WARNING

This service information is designed for experienced repair technicians only and is not designed for use by the general public. It does not contain warnings or cautions to advise non-technical individuals of potential dangers in attempting to service a product. Products powered by electricity should be serviced or repaired only by experienced professional technicians. Any attempt to service or repair the product or products dealt with in this service information by anyone else could result in serious injury or death.

EXPLODED VIEW



REPLACEMENT PARTS LIST

REF. NO.	SAFETY PARTS	PART NO.	PART NAME	QTY	REMARKS
2		FFE09030402M	GUARD MARK ASS'Y	1	K058M
3		FFE090101AVP	FRONT GUARD	1	M0113
4		FFE0802950EM	SPINNER	1	N0999
5		FFE08010200M	BLADE	1	N0214
6		FFE0931020IM	GUARD RING ASS'Y	1	N0428
7		FFE09099001M	GUARD SET NUT	1	BZ054
8		FFE090203ASM	REAR GUARD	1	M0113
9		FFE0204040IM	FRONT OUTER COVER	1	N0428
10	⚠	FFE06000404M	MOTOR ASS'Y	1	
11		FFE08070701M	BLADE SET PIN	1	
12	⚠	FFE04090201M	CONDENSER	1	1μF - 500V
13	⚠	FFE01020402M	MOTOR LEAD ASS'Y	1	
14	⚠	EYP-2BN109L	THERMAL FUSE	1	
15		FFE03199501M	GEAR BOX COVER	1	
16		FFE0314040IM	REAR OUTER COVER	1	N0428
17		FFE0305020WM	CLUTCH NUT	1	BZ054
18		FFE03029001M	GEAR BOX	1	
19		FFE03200401M	GEAR SET SCREW ASS'Y	1	
20		FFE03099201M	GEAR	1	
21		FFE03210401M	CLUTCH SHAFT ASS'Y	1	
22		FFE03090201M	ROD	1	
23		FFE05090200M	ROD SETTING SCREW	2	
24		FFE05050401M	UPPER PART	1	
25		FFE03290401M	FRANGE SHEET	1	
26		FFE14010201M	FRENECK BALL & SPRING ASS'Y	1	
30		FFE05049205M	FRENECK BALL HEAD	1	
31		FFE03160201M	WASHER	1	
32		FFE03160202M	WASHER	1	
33		FFE05070401M	HOLDING PLATE	1	
34		FFE0501040IM	KNEEJOINT	1	N0428
35		FFE05100201M	ANGLE ADJUSTMENT SPRING	1	
36		XNG6H	NUT	1	
37		FFE0427040IM	SLIDE PIPE	1	N0428
38		FFE04030201M	SLIDE SPRING	1	
39		FFE0420040IM	POLE CAP	1	N0428
40		FFE04030401M	SLIDE BUTTON SPRING	1	
41		FFE0421041IM	SLIDE BUTTON	1	N0428
42		FFE0423040IM	POLE	1	N0428
43		FFE03280402M	PCB SHEET	1	
44		FFE05160604M	PANEL	1	P002
45		FFE04120401M	FRANGE	1	
46	⚠	FFE12019103M	POWER CORD ASS'Y	1	S-3S
47		FFE03280401M	PCB SHEET	1	
48	⚠	FFE17000601M	CIRCUIT ASS'Y	1	
49		FFE04250402M	POLE COVER	1	N0508
50		FFE05160402M	CORD CLIP	1	
51		FFE0450040IM	BASE	1	N0509
52		FFE04020402M	BOTTOM PLATE	1	
53		FFE17010401M	FILTER (RECEIVER)	1	
54		FFE17700605K	REMO-CON SET	1	RS314
55		FFE1801020SM	BATTERY COVER	1	N0471
56		FFE03169001M	WASHER	1	
57		FFE0403040IM	FRONT OUTER COVER SET SCREW	2	
58		FFE19010401M	FILTER FRAME	1	
59		FFE17710404M	FILTER	1	
60		FFE19020401M	FILTER SUPPORT	1	

Colour code : N0428 - CHAMPAGNE GOLD, BZ054 - WHITE, N0214 - BLACK, M0113 - METALIC BLUE

PACKING LIST

	SAFETY PARTS	PART NO.	PART NAME	QTY	REMARKS
		P30KH8801ZM	CARTON BOX	1	
		F304KH8003ZM	PACK A	1	
		F304KH8004ZM	PACK B	1	
		P30KH8001ZM	INSTRUCTION MANUAL	1	

**Alleru-buster: Green Tea Catechin,
Biological degerming function equipped filter**

Alleru-buster (anti-allergen)

- **To in-activate allergen** *1
To restrain the activity of allergen caught by filter
- Testing Unit: Osaka Municipal Technical Research Institute
- Testing Method: to use alcoholic element immunoassay to prove the reduction of purified allergen

Green Tea Catechin

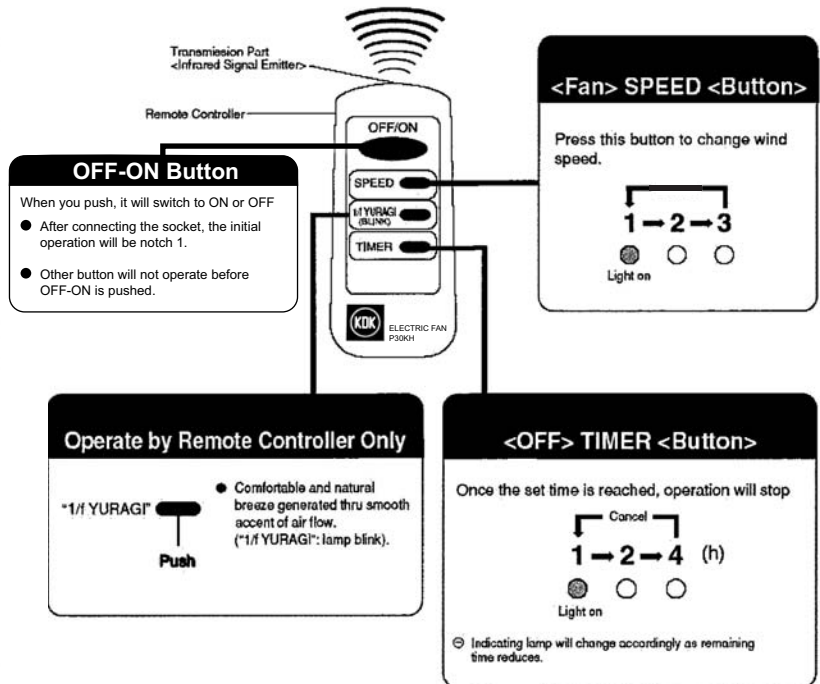
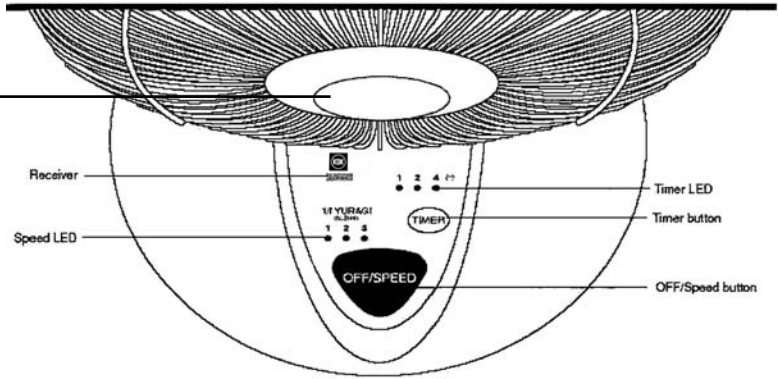
- **To in-activate virus**
To restrain the activity of virus caught by filter
- Catechin is the natural element extracted from tea
- Testing Unit: Kitasato Research Center of Environmental Sciences
- Testing Method: to use Brack Method to prove the non-activity rate of virus

The dust collecting filter has unique fragrance of the catechin that does no harm to human body.

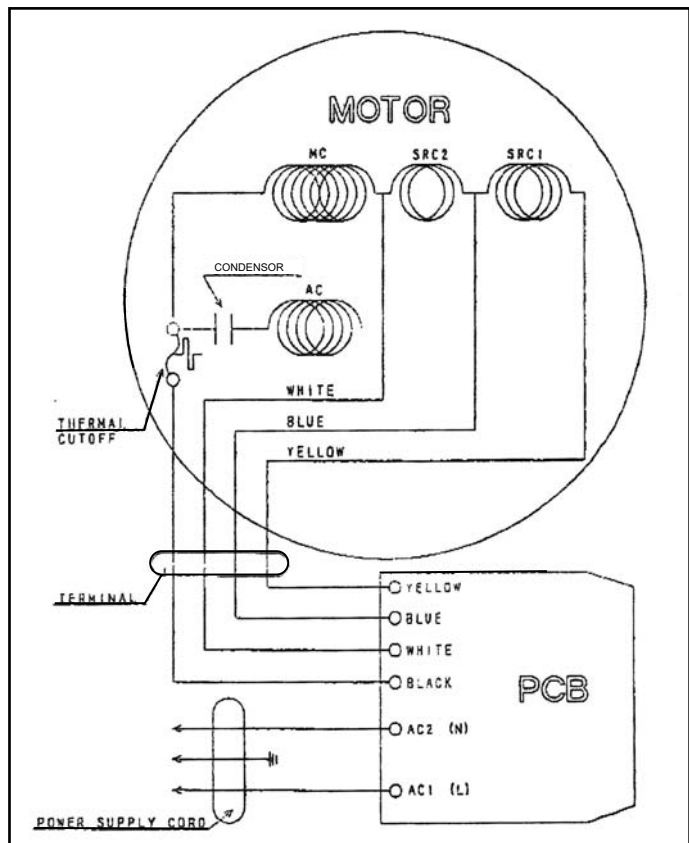
Biological degerming

- **To remove both bacteria and mould**
To restrain the reproduction of the bacteria caught by filter
- Testing Unit: Japan Food Research Laboratories
- Testing Method: to use standard open air culture base and open air plating method to confirm

*1) The allergen means the substance causing allergy and includes body and soil of tick, mould and pollen.



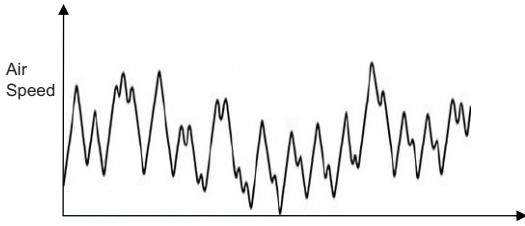
WIRING DIAGRAM



SCREW LIST

REF. NO.	PART NUMBER
A	XTB4+8FFX
B	XSB4+S6FX
C	XTB4+16CFX
D	1208V0455AM
E	XTB35+10C
F	XTT4+10CFX
G	XTB4+12CFX
H	XST6+18
J	XTN4+10CFX

1/f Yuragi – What is it?



1/f Yuragi is a pattern of unexpected variations.

- *
1. It is studied that people eventually get tired of some constant (non-change) stimulations.
 2. But people feel uncomfortable if stimulations change too suddenly.
 3. Yuragi is a right proportion between the above 2 extremes.

1/f Yuragi is also our human body music rhythm – Heart beat

1/f Yuragi – Why does it make us comfort?

Beside unexpected variations.

People feel comfort because of α brain waves.

1/f Yuragi has a form similar to our α brain waves.

Daily 1/f Yuragi example

1. Sound of river flowing
2. Seashore wind
3. Relaxing music



Brings comfort and relief



Inspiring and calming



Relaxing, regenerating, stabilizing your body and mind

1/f Yuragi – What actually it is?

1/f Yuragi?

f=frequency / Yuragi(Japanese)=Fluctuations

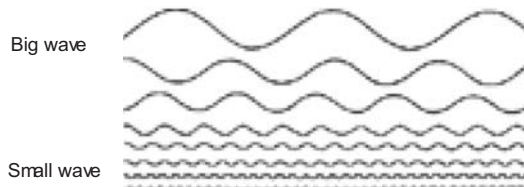
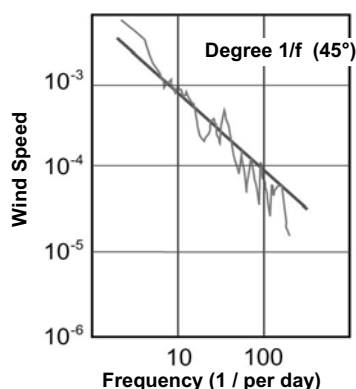
1/f is the slope of the line on this graph.

This line shows that the stronger wind speed has a lower frequency.

In other words

1. big wave (strong wind speed) has lower frequency.
2. small wave (low wind speed) has higher frequency.

Superimpose all the waves above becomes the wave (or wind change pattern) of **Yuragi Wind Pattern**.



Graph 1: Basic wave profile



Graph 2: Yuragi wave profile

1/f Yuragi – Technology comparison

Current function Rhythm Breeze

Speed notch toggles by 4 secs regularly

