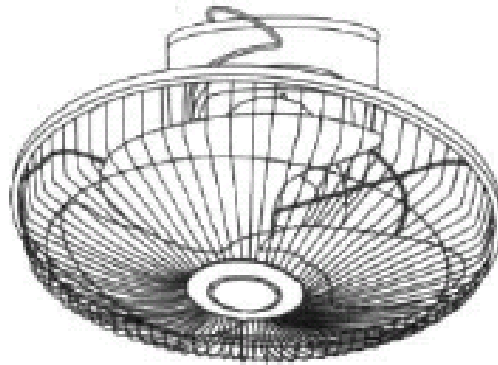


Service Manual

Electric Fan
M40RS



SPECIFICATIONS

VOLTAGE (V)		FREQ. (Hz)		POWER (W)		WEIGHT (kg)			
220 - 240		50		45 - 51.5		4.2			
Type	Rating			Blade speed of Each position (r/min.)	Power Factor (Note: motor only)	Rated Air Delivery (m ³ /min.)	Number of Speed	Fan Size (cm)	Type of Insulation
	Voltage (V~)	Frequency (Hz)	Input (W) Fan Motor						
F-409QH	220	60	61	610,800,1015,1170,1285	0.99	84	5	40	Functional Insulation

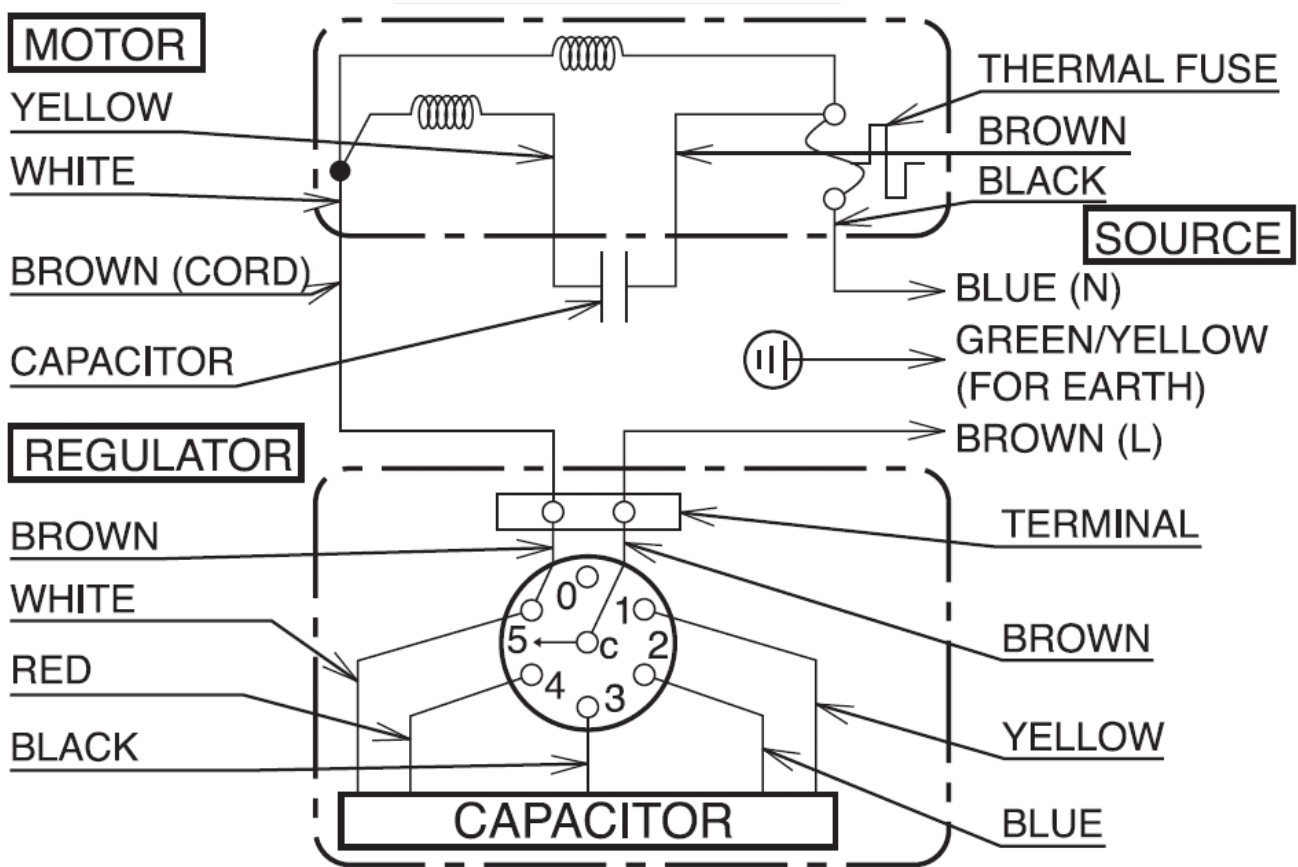
⚠ WARNING

This service information is designed for experienced repair technicians only and is not designed for use by the general public. It does not contain warnings or cautions to advise non-technical individuals of potential dangers in attempting to service a product. Products powered by electricity should be serviced or repaired only by experienced professional technicians. Any attempt to service or repair the product or products dealt with in this service information by anyone else could result in serious injury or death.

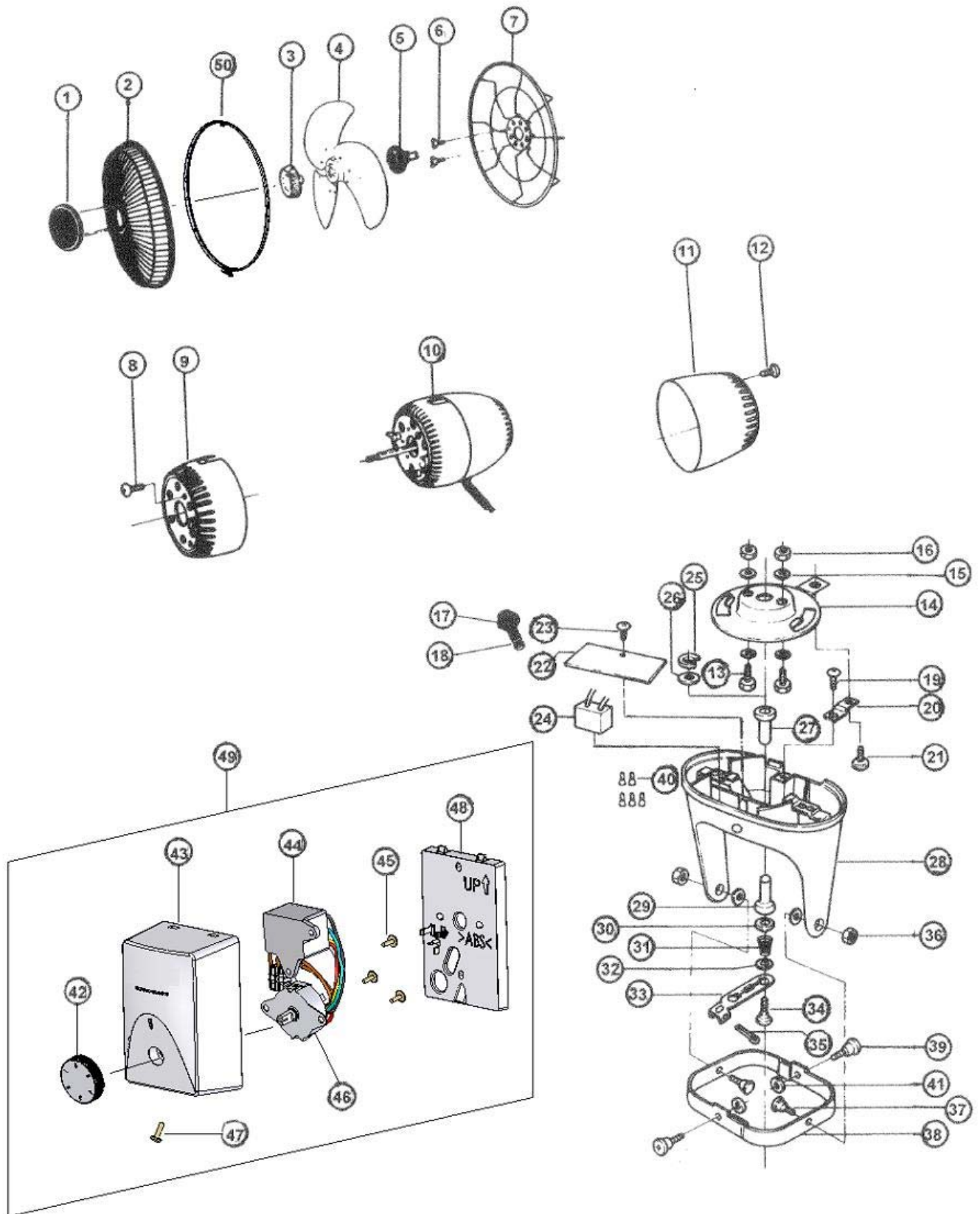
TABLE OF CONTENTS

	Page
SPECIFICATION	1
WIRING DIAGRAM	2
LOCATION OF PARTS MODEL M40RS	3
REPLACEMENT PART LIST MODEL M40RS	4

WIRING DIAGRAM



LOCATION OF PARTS M40RS



REPLACEMENT PARTS LIST M40RS

Ref No.	Safety Parts	Part No.	Part Name	Qty	Remarks
1		H40BK0920BMA	GUARD MARK ASS	1	M0028
2		400SS0901AMA	FRONT GUARD COAT	1	SM004
3		401UH0807ZMD	SPINNER	1	BZ344
3		401UH0807ZMA	SPINNER	1	N0118
4		404TZ0800DME	BLADE ASS COAT	1	BZ344
4		404TZ0800DMA	BLADE ASS COAT	1	M0088
5		407XH0802ZMA	BLADE BOSS	1	
6		XVP4A16FJ	WING BOLT	2	
7		TR40T0902BMA	REAR GUARD COAT	1	SM004
8		XSB4+8FJ	BIND SCREW	1	
9		WR40T0221DM	FRONT OUTER COVER	1	BZ054
10	⚠	409QH0110ZM	MOTOR UNIT	1	
11		WR40T0320BM	REAR OUTER COVER	1	BZ054
12		XTT4+14CFJ	TRUSS TAP SCREW	2	
13		401QH8210ZM	CARL BOLT PLUG SET	2	
14		405QZ0469BM	MOUNTING PLATE	1	
15			SPRING WASHER	2	ONE SET WITH CARL BOLT PLUG SET
16			NUT	2	
17		401QH0108AM	CORD BUSHING	1	YZ040
18		401QH0386BM	LEAD WIRE SPRING	1	
19		XTB4+14CFJ	SET PLATE SCREW	1	
20		405QZ4454CM	SET PLATE	1	
21		XTB4+14CFJ	BIND TAP SCREW	1	
22		405QZ4446AM	PLATE	1	
23		1208V0455BM	STAR HEAD TAP SCW	1	
24	⚠	409QH0392ZM	CONDENSER	1	
25		XUC7FJ	E RING	1	
26		XWA4BFJ	SPRING WASHER	1	
27		400QH4420ZM	ROTARY SHAFT BUSH	1	
28		405QZ0401GM	STAND	1	BZ054
29		400QH4419AM	ROTARY SHAFT	1	
30		405QZ0326AM	WASHER A	1	
31		405QZ0325AM	ROD SPRING	1	
32		400QH0327AM	WASHER B	1	
33		405QZ0316A	ROD	1	
34		405QZ0328A	ROD SET SCREW	1	
35		XPD3Y20FJ	SPLIT PIN	1	
36		XNG6JFJ	HEXAGON NUT	1	
37		400QZ4493A	GIMBALS SCW	2	
38		405QZ0407FM	GIMBALS COAT	1	BZ054
39		WR40T0297AM	YOKE SUPPORTER	2	
40		SCE100	CONNECTOR CE-100	5	
41			WASHER	2	ONE SET WITH YOKE SUPPORTER
42		MY1581151ZM	KNOB	1	BZ054
43		KY1531030AMW	REGULATOR COVER ASSY	1	
44		MY1590399CM	CONDENSER	1	
45		XTT4+10CFJ	TRUSS TAP SCREW	3	
46		560A11001ZC	SWITCH ASSY	1	
47		XTN4+16CFJ	PAN TAP SCREW	2	
48		409QH1032ZM	REGULATOR BASE	1	BZ054
49		M40RS1000AMA	REGULATOR ASSY	1	BZ054
50		405SZ0932CMW	GUARD RING ASS'Y	1	T0194
50		405SZ0932AMW	GUARD RING ASS'Y	1	BZ054

PACKING LIST

Ref No.	Safety Parts	Part No.	Part Name	Qty	Remarks
1		M40RS8811ZM	PART SET	1	
2		M40RS8103ZM	CASE(MOTOR STAND)	1	
3		M40RS8303ZM	CASE(GUARD&BLADE)	1	