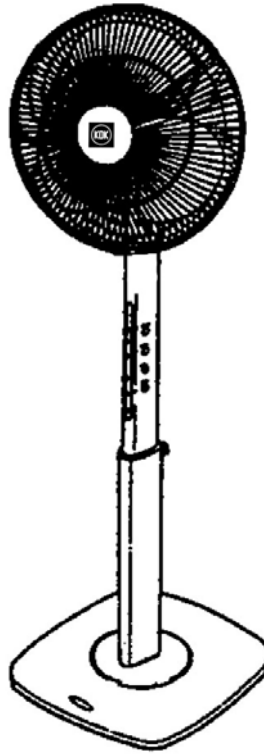


Service Manual

Electric Fan
N40HS



SINCE 1909



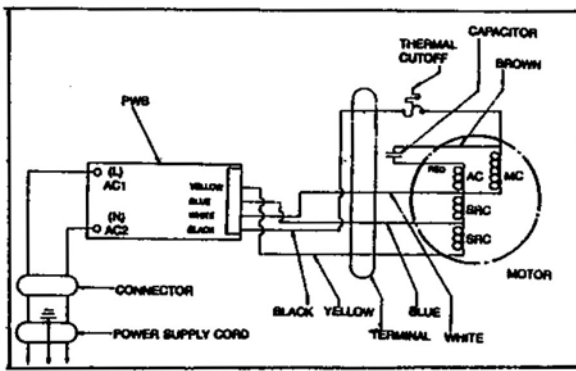
SPECIFICATION

50HZ								
MODEL	WATTAGE		RPM		AIR VELOCITY		AIR DELIVERY	
	LOW	HIGH	LOW	HIGH	m/min	ft/min	m ³ /min	ft ³ /min
N40HS	42-56	54-68	740-920	1110-1310	240	787	66	2331

WARNING

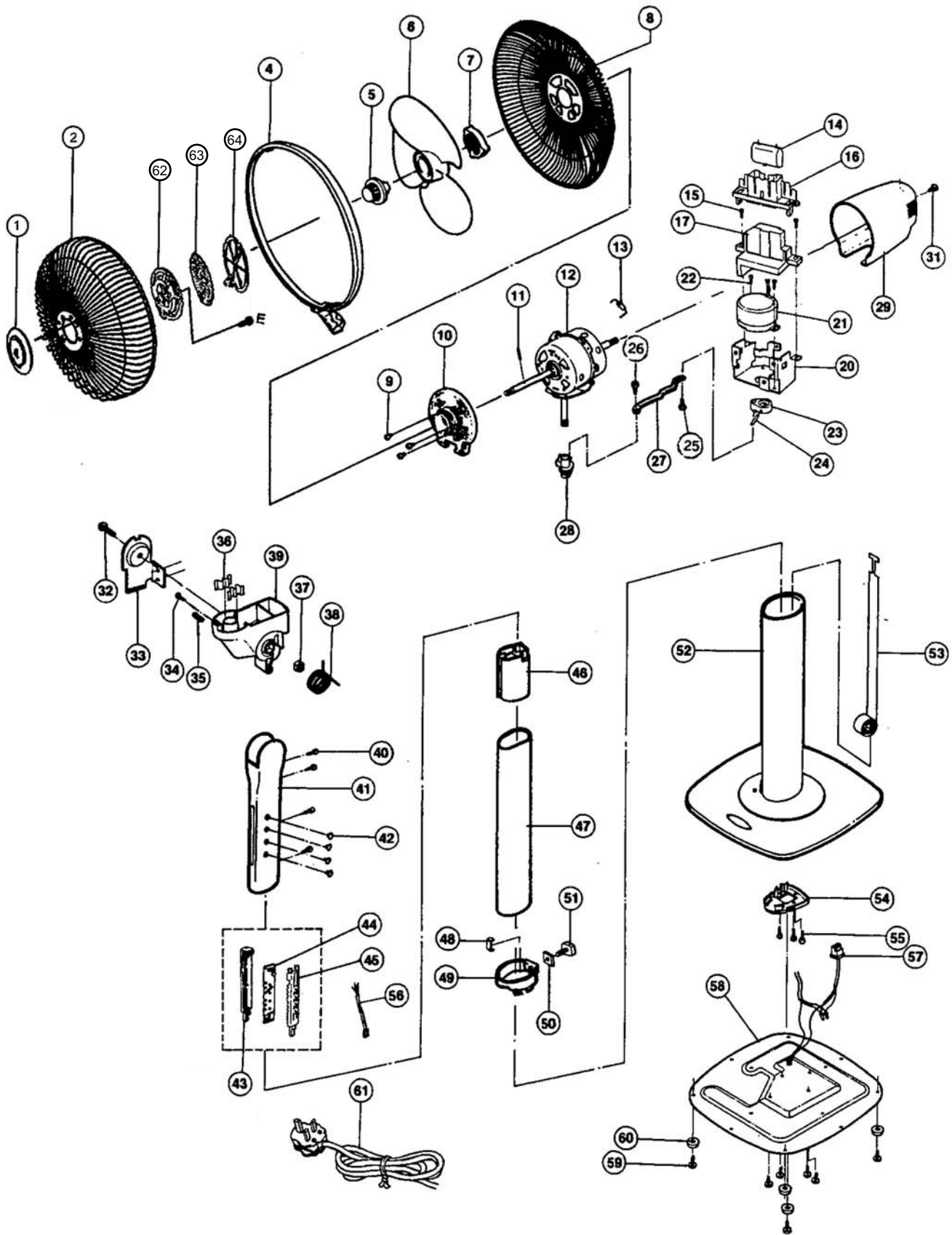
This service information is designed for experienced repair technicians only and is not designed for use by the general public. It does not contain warnings or cautions to advise non-technical individuals of potential dangers in attempting to service a product. Products powered by electricity should be serviced or repaired only by experienced professional technicians. Any attempt to service or repair the product or products dealt with in this service information by anyone else could result in serious injury or death.

WIRING DIAGRAM



N40HS

LOCATION OF PARTS MODEL N40HS



REPLACEMENT PART LIST MODEL N40HS

Ref No	Part No	Part Name	Qty	Remark
1	407MS0920ZM	Guard Mark	1	N0213
1	407MS0920ZM	Guard Mark	1	B0306
2	405UH0901AM	Front Guard	1	N0224
2	405UH0901AM	Front Guard	1	SM004
4	407UH0931ZM	Guard Ring	1	N0213
4	407UH0931ZM	Guard Ring	1	B0306
5	30C1P0807AM	Spinner	1	N0999
6	1610Z0801AM	Blade	1	N0299
			1	
7	D30BM0220ABK	Guard Set Nut	1	N0999
8	408KH0902ZM	Rear Guard	1	N0224
8	408KH0902ZM	Rear Guard	1	SM004
9	XSB4+8FU	Motor Cover Screw	3	
10	WK40T0221GM	Front Outer Cover	1	N0213
10	WK40T0221GM	Front Outer Cover	1	B0306
11	1210Z0814ZM	Blade Pin	1	
12	407XH0112ZM	Motor Complate	1	200V
13	EYP2BN109L	Thermal Fuse	1	
14	1608V0392	Capacitor	1	220/240V
15	XSB4+14FU	Bind Screw	2	
16	404UR353ZM	Condensor Holder	1	
17	45HRZ0335AM	Balancing Weight	1	
20	404UR352ZM	Timing Motor Holder	1	
21	404UR0347C	Timing Motor	1	200/240V
22	XSN4+6FU	Pan Screw	2	
23	404UR0342ZM	Crank	1	
24	C309J0814	Shaft Pin	1	
25	XTT4+12FJ	Rod Setting Gear Screw	1	
26	403TP0316B	Rod Setting Screw	1	
27	404UR0313ZM	Rod	1	
28	B40BM0502A	Upper Kneejoint	1	
29	1608V0320BM	Rear Outer Cover	1	N0213
29	1608V0320BM	Rear Outer Cover	1	B0306
31	XST4+8C	Outer Cover Screw	1	
32	45HRZ0504BM	Kneejoint Axie	1	
33	XST6+20FJ	Holding Plate	1	

Ref No	Part No	Part Name	Qty	Remark
34	XTT4+10	Kneejoint Screw	1	
35	KB40U0531	Ball Spring	1	
36	403TP0503EM	Kneejoint Spring	2	
37	XNG6H	Kneejoint Axie Nut	1	
38	403TI0542AM	Angel Adjust Spring	1	
39	45HRZ0501BM	Lower Kneejoint	1	N0213
39	45HRZ0501BM	Lower Kneejoint	1	B0306
40	XSB4+8	Kneejoint Screw	4	
41	408HH0531ZM	Switch Pole	1	
42	45HRZ1002ZM	Switch Button	4	N0213
42	45HRZ1002ZM	Switch Button	4	B0306
43	45HRZ0551CM	Switch Box A	1	
44	408HH4800ZM	PCB	1	220/240V
45	45HRZ0552BM	Switch Box B	1	
46	401HH0553ZM	Joint	1	
47	45HRZ0452AM	Slide Pipe	1	N0213
47	45HRZ0452AM	Slide Pipe	1	B0306
48	C301C0461ZM	Bush Holder	1	
49	45HRZ0465ZM	Pole Cap	1	N0213
49	45HRZ0465ZM	Pole Cap	1	B0306
50	45HRZ0160ZM	Square Nut	1	
51	C30C0473AM	Round Lock screw	1	N0213
51	C30C0473AM	Round Lock screw	1	B0306
52	45HRZ0401AM	Stand	1	N0213
52	45HRZ0401AM	Stand	1	B0306
53	402HRZ0479ZM	Slide Spring Ass'y	1	
54	45HRZ0453ZM	Frange	1	
55	XTB4+16C	Frange Screw	3	
56	408KH1331ZM	Switch Lead Ass'y	1	
57	401HKH0519CM	Inner Lead Ass'y	1	
58	400KS0402AM	Bottom Plate	1	
59	XTB4+16C	Bottom Plate Screw	8	
60	00STG0101B	Stand Bushing	4	
61	403KS1210BM	Cord W/Plug (S-3S)	1	
62	C324Z0943BH	Filter Frame	1	
63	304KH0941ZH	Filter	1	
64	C324Z0944BH	Filter Support	1	

Note : Please code the colour of the part when do part ordering.
The colour are N0428 - Beige. B0268 - Blue.

PACKING LIST

Part No	Part Name	Qty	Remarks
408HS8801ZM	Carton Box	1	
408KH8001ZM	Instruction Manual	1	
F00PPC0162AM	Poly Cover	1	