

Service Manual

Industrial E- Fan




K50RA

K50UA

WARNING

This service information is designed for experienced repair technicians only and is not designed for use by the general public. It does not contain warnings or cautions to advise non-technical individuals of potential dangers in attempting to service a product. Products powered by electricity should be serviced or repaired only by experienced professional technicians. Any attempt to service or repair the product or products dealt with in this service information by anyone else could result in serious injury or death.

IMPORTANT SAFETY NOTICE

There are special components used in this equipment which are important for safety. These parts are marked by  in the Schematic Diagrams, Exploded Views and Replacement Parts List. It is essential that these critical parts should be replaced with manufacturer's specified parts to prevent shock, fire or other hazards. Do not modify the original design without permission of manufacture.

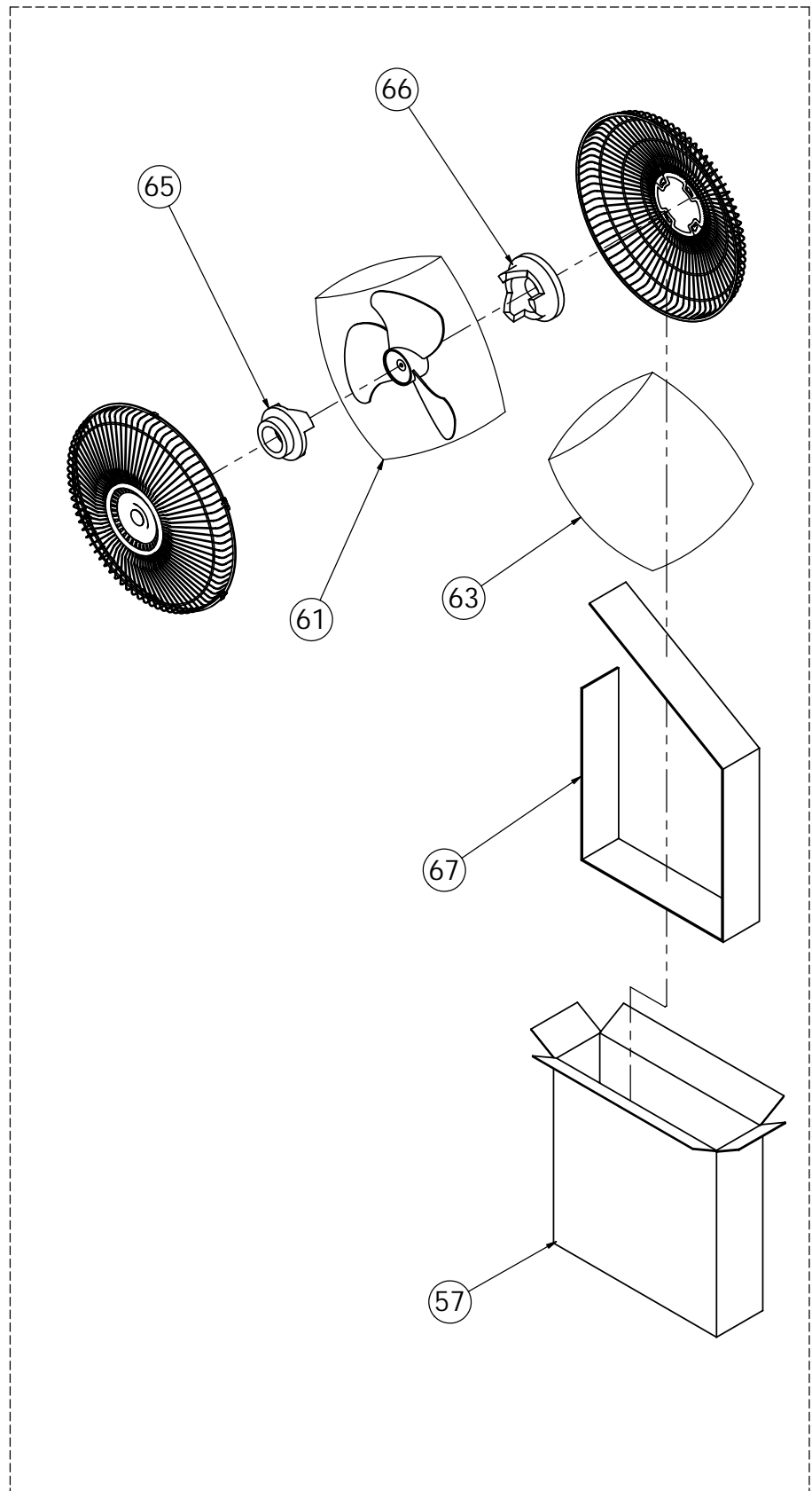
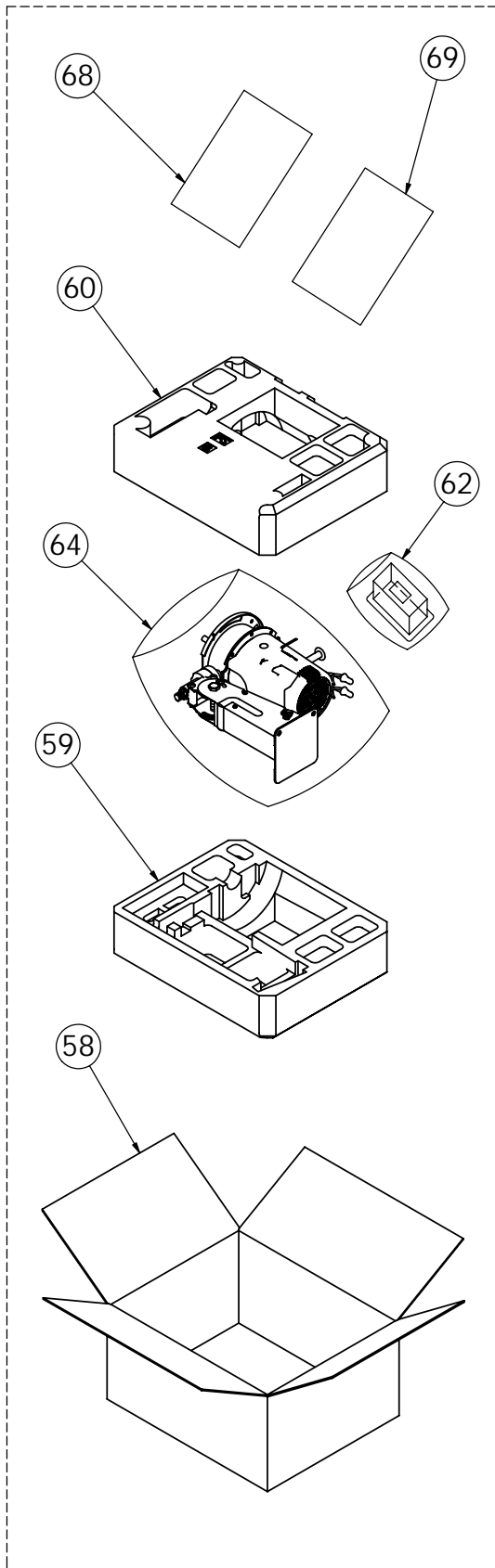
CONTENTS

	PAGE
1. Parts Identification	1~2
2. Parts List	3~4
3. Specifications	5



PARTS IDENTIFICATION

INDUSTRIAL ELECTRIC FAN
K50RA



PARTS LIST & PARTS QUOTATION

IND.E-FAN : K50RA

Item	Parts No.	Parts Name.	Q'ty	Remarks
1	FFI2000001T	Front Guard Assy No344	1	
2	FFI0400001T	Blade Assy Toso Mz390	1	
3	FFI0420001T	Rokkaku Bolt	2	
4	FFIX100006T	Pan Screw (M6x16 Ip/Sw/Fw)	5	Rear Guard (4 Pcs) / Stand Set Toso (1 Pcs)
5	FFI6800001T	Rear Guard Toso No344	1	
6	FFIX110000T	Upper H Bolt W Tsuki	3	Front Outer Cover Fixing Motor Assy
7	FFI6800002T	Front Outer Cover	1	
8	FFI4800003T	Motor Ass'y	1	NA 220-240 V 50hz / 220-230 V 60hz (Motor + Screw)
(8)	FFI4800004T	Motor Ass'y	1	UA 110-127 V 50/60 Hz (Motor + Screw)
9	FFI2400001T	Gear Box Ass'y	1	
10	FFIX100003T	Pan Screw	4	Gear Box Fixing Screw
11	FFI2410001T	Gear Ass'y	1	Gear + Gear Shaft
12	FFI0800001T	Clutch Cover	1	
13	FFI0810001T	Clip	1	
14	FFIX100008T	Bind Screw	3	Clutch Cover Fixing Screw
15	FFI0820001T	Clutch Shaft	1	
16	FFI8610001T	Worm Wheel	1	
17	FFI0410001T	Balance Weight Toso	1	
18	FFIX100004T	Pan Screw	1	Balance Weight Fixing Screw
19	FFI6810001T	Rear Outer Cover No344	1	
20	FFI7220001T	Spacer	1	
21	FFI8600004T	Washer	1	
22	FFIX100009T	Trass Tap.4x8-3	7	Rear Outer Cover (1) / Stand Cover (6)
23	FFI0900001T	Clutch Nut Tome Neji	1	
24	FFI0890001T	Clutch Nut	1	
25	FFIX100007T	Truss Screw	1	Rear Outer Cover Fixing Screw
26	FFI6000001T	Pat	1	
27	FFI7240001T	Split Pin	1	
28	FFI6820001T	Rod	1	
29	FFI6840002T	Upper Set Screw B	1	
30	FFI6830001T	Rod Bush	2	
31	FFI0880001T	Crank	1	
32	FFV6840001T	Rod Set Screw A	1	Rod Set Screw
33	FFIX100002T	Pan Screw (S.Washer)	1	Crank Fixing Screw
34	FFI8000001T	Upper Part No002	1	
35	FFI8900001T	Yoke Shaft Bush	1	
36	FFI0860001T	Cord Bushing Nd001	2	Power Cord Fixing With Stand Set Toso
37	FFI4100001T	Knee-Joint-Assy	1	
38	FFI8600001T	Small R Plain Washer	1	
39	FFI8600003T	Wave Washer Ww12	1	
40	FFIX100000T	H Nut 35hu	2	
41	FFI4000001T	Knee Joint Spring	4	
42	FFI0830001T	Collar	1	

PARTS LIST & PARTS QUOTATION

IND.E-FAN : K50RA

Item	Parts No.	Parts Name.	Q'ty	Remarks
43	FF17200001T	Stand Set Toso No344	1	
44	FF12800001T	H Bolt	1	
45	FF18600002T	S.Washer	1	
46	FF18010001T	Upper Parts Set Scw	1	
47	FF10840001T	Condenser	1	NA 480 VAC, 5.0 μ F
(47)	FF10840002T	Condenser	1	UA 250VAC 18.0 μ F
48	FFIX110002T	Hexagon Nut	1	Nahm Fixing Cord Clip With Stand Set Toso
49	FF10850002T	Cord Clip	1	Nahm Fixing Power Cord
50	FFIX100001T	Bind Screw	1	Nahm Fixing Cord Clip With Stand Set Toso
51	FF10850001T	Cord Clip	2	Power Cord Fixing With Stand Set Toso
52	FF17210002T	Stand Cover Toso No344	1	
53	FF10870001T	Cord Nd001	1	
54	FF17230001T	Switch Assy	1	
55	FFIX110003T	Truss Tap Screw	1	Fixing Condenser
56	FFIX200001T	Torx Bind B Type	3	Fixing Cord Clip / Stand Set Toso
57	FF19000000T	Blade Case Ass'y A	1	With Made In Thailand
(57)	FF19000001T	Blade Case Ass'y B	1	Without Made In Thailand
58	FF19900000T	Motor Case Ass'y A	1	NA With Made In Thailand
(58)	FF19900001T	Motor Case Ass'y B	1	NA Without Made In Thailand
(58)	FF19900002T	Motor Case Ass'y C	1	UA With Made In Thailand
(58)	FF19900003T	Motor Case Ass'y D	1	UA Without Made In Thailand
59	FF18800001T	Foam Pack A	1	For Motor
60	FF18800002T	Foam Pack B	1	For Motor
61	FFIX000000T	Poly Cover	1	For Blade
62	FFIX000001T	Poly Cover	1	For Switch
63	FFIX000002T	Poly Cover	1	For Blade Assembly Packing
64	FFIX000003T	Poly Cover	1	For Motor Packing
65	FF18880001T	Blade Pat A	1	For Blade Assembly Packing
66	FF18880002T	Blade Pat B	1	For Blade Assembly Packing
67	FF18880003T	Pad	1	For Blade Assembly Packing
68	FF11100001T	Instructions	1	
69	FF11100002T	Installing Note	1	

3. Specifications

Model : 50KR / 50UA

Model No. 型號 رقم الموديل	ความถี่ ของ กระแสไฟฟ้า [Hz]	แรงดัน ของ กระแสไฟฟ้า [V]	Power consumption 耗電量 ความสิ้นเปลืองพลังงานไฟฟ้า استهلاك القدرة [W]	Speed 速度 ความเร็ว السرعة [R/M]	Weight 重量 التفصيل الوزن [kg]	
K50UA	50/60	110	136/198	1366/1535	13.0	
		120	147/208	1387/1583		
		127	157/224	1397/1610		
		220	156/213	1381/1563		
		230	160/219	1392/1588		
		240	168/-	1401/-		
K50RA	50/60	110	H	134/185	1339/1501	13.1
			M	105/137	1190/1193	
			L	94/112	1073/982	
		120	H	148/199	1363/1550	
			M	113/152	1245/1284	
			L	101/127	1137/1103	
		127	H	158/212	1375/1573	
			M	119/161	1269/1348	
			L	106/137	1182/1169	
		220	H	146/199	1346/1523	
			M	115/152	1206/1197	
			L	104/124	1082/979	
		230	H	156/208	1361/1545	
			M	118/158	1236/1256	
			L	107/132	1130/1046	
		240	H	163/-	1371/-	
			M	124/-	1261/-	
			L	113/-	1155/-	

Insulation class E

絶縁等級 E

ชนิดที่ใช้เป็นมาตรฐาน E

نوع العزل إي E

Rated capacity: a.c. 110-127V 50/60Hz

額定功率 a.c. 220-240V 50Hz

a.c. 220-230V 60Hz

50Hz

المعايرة (القدرة الحصانية)