



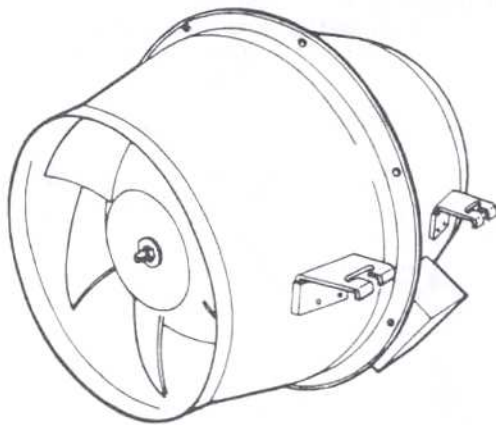
INSTRUCTION MANUAL

Compact size axial flow fan

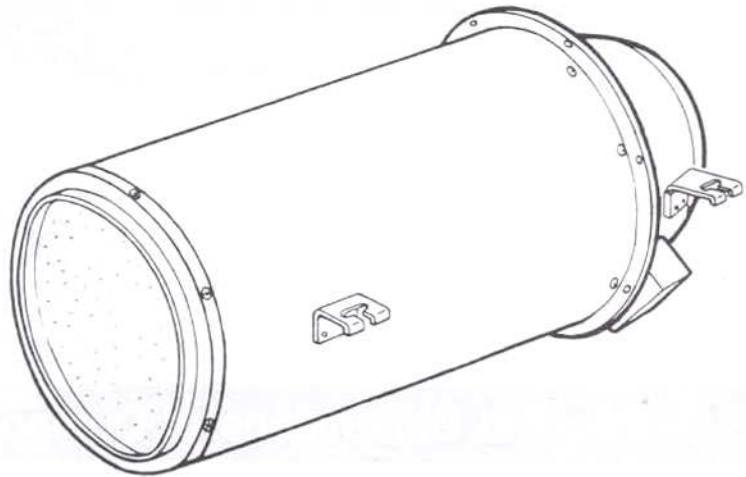
K25DSF1	K28DSR	K28DSM	K35DSM	K40DSL
K40DTL	K40DSH	K40DTH	K45DST	K45DTT
K45DSL	K45DTL	K45DTH	K55DTL	K55DTH

Low noise type compact size axial flow fan

K25USF1	K28USR	K28USM	K35USM	K40USL
K40UTL	K40USH	K40UTH	K45UST	K45UTT
K45USL	K45UTL	K45UTH	K55UTL	K55UTH



Compact size axial flow fan

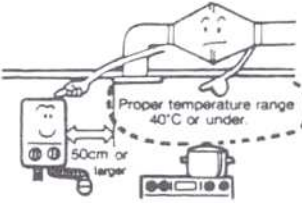
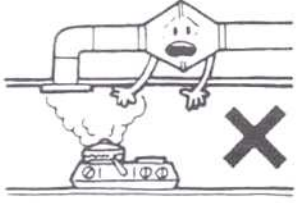
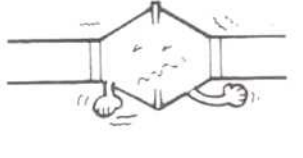

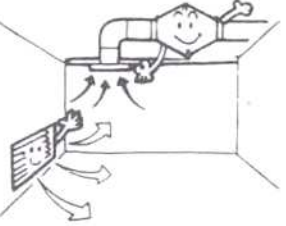



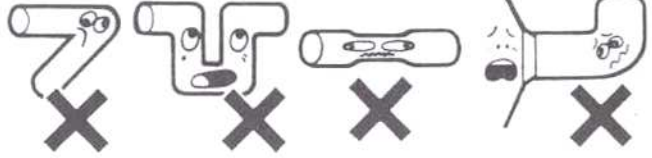
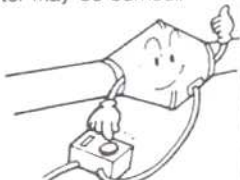
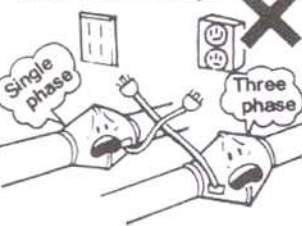

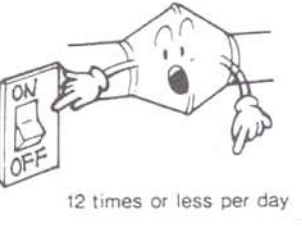


Low noise type compact size axial flow fan

Thank you for purchasing the **KDK** Compact or Low noise type compact size axial flow fans. Please be sure to always follow the details of these instructions in installing and using your unit, otherwise sudden accidents or breakdowns will occur. Hence we strongly urge both the installer and the final user to read these instructions carefully, So that the unit can be used safely throughout its service life.

1. Installation Cautions

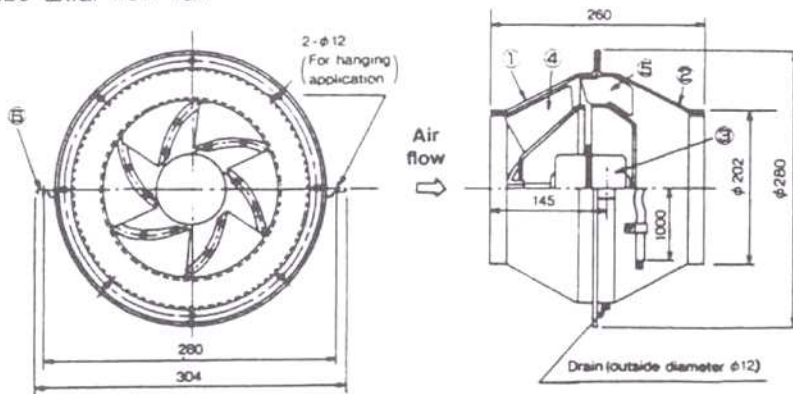
● Observe the following precautions as to the place of installation and the installation procedure.

<p>Avoid a location susceptible to high temperatures over 40° degree. (Trouble may be caused and the motor life may be shortened.)</p> 	<p>Avoid a location susceptible to too much soot.</p> 	<p>Install securely. (Otherwise noise and vibration may be generated.)</p> 	<p>Install a fan protection device like a motor over load breaker in the wiring.</p> 		
<p>The room shall have an air supply port for effective ventilation.</p> 	<p>Provide an access door for inspection and maintenance.</p> 	<p>Do not use the fan in the place where humidity is high.</p> 	<p>Never install the fan upside down or vertically.</p> 		
<p>Connect the duct avoiding the following cases.</p> <p>(1) Sharp bending angle. (2) Bended more than once. (3) Reduced diameter at the connection. (4) Bending near the discharge port or suction port.</p> 				<p>When connecting an electric flow rate control unit (inverter, slidac, etc.) be sure to check the safety of the equipment. (The motor may be burned.)</p> 	<p>Do not supply power of an incorrect rating. Be careful not to wire incorrectly.</p> 
<p>The fan is for indoor use. Avoid the location exposed to direct sunshine or rain.</p> 		<p>Do not repeat starting and stopping. (Otherwise the fan may deteriorate.)</p> <p>12 times or less per day</p> 			

2. Names and Dimensions of Components

Dimensions (mm)

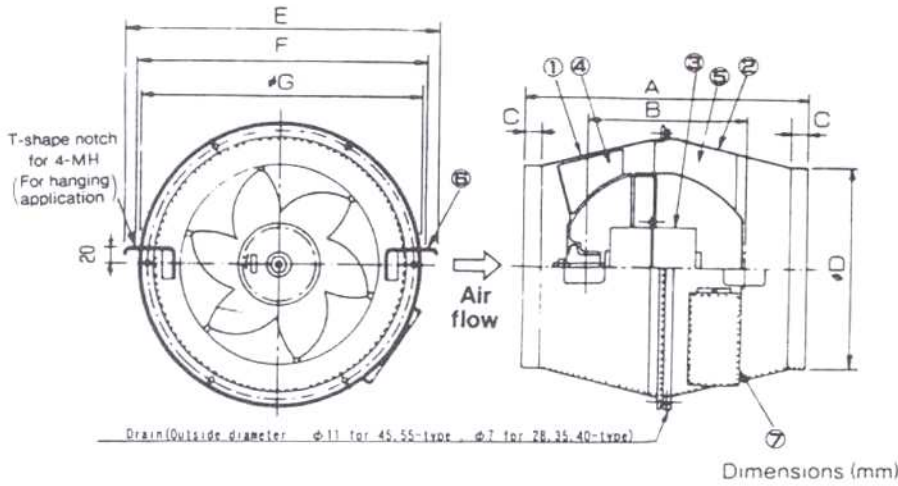
Compact size axial flow fan
K25DSF1



No.	Parts name	Qty.
1	Casing A	1
2	Casing B	1
3	Motor	1
4	Wheel	1
5	Guide vanes	4
6	Hanger fittings	2

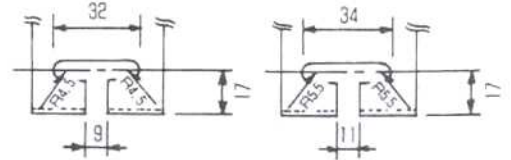
Compact size axial flow fan

K28DSR K28DSM K35DSM K40DSL K40DTL K40DSH K40DTH
K45DST K45DTT K45DSL K45DTL K45DTH K55DTL K55DTH



No.	Parts name	Q'ty.
1	Casing A	1
2	Casing B	1
3	Motor	1
4	Wheel	1
5	Guide vanes	7
6	Hanger fittings	4
7	Terminal cover	1

Detail of hanger fittings



Applied model number

K28DSR K28USR
K28DSM K28USM
K35DSM K35USM
K40DSL K40USL
K40DTL K40UTL
K40DSH K40USH
K40DTH K40UTH

Applied model number

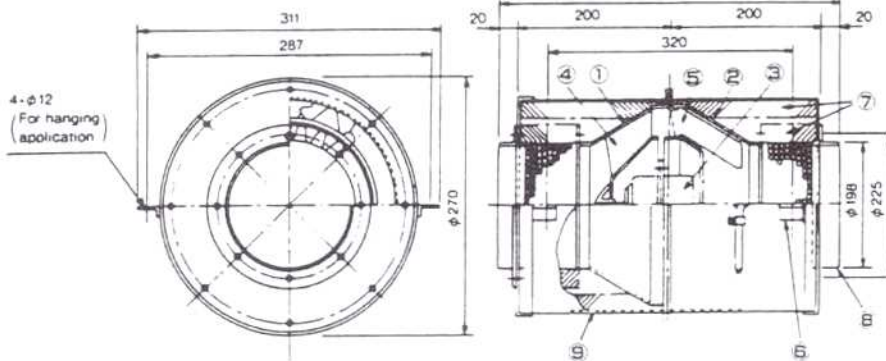
K45DST K45UST
K45DTT K45UTT
K45DSL K45USL
K45DTL K45UTL
K45DTH K45UTH
K55DTL K55UTL
K55DTH K55UTH

Model number	A	B	C	D	E	F	G	H
K28DSR, K28DSM	350	197	22	248	400	366	350	8
K35DSM	410	206	21.5	298	460	426	415	8
K40DSL, K40DTL, K40DSH, K40DTH	480	206	26	347	525	491	480	8
K45DST, K45DTT, K45DSL, K45DTL, K45DTH	540	218	25.5	394	588	554	546	10
K55DTL, K55DTH	680	217	25	445	673	639	631	10

Low noise type compact size axial flow fan

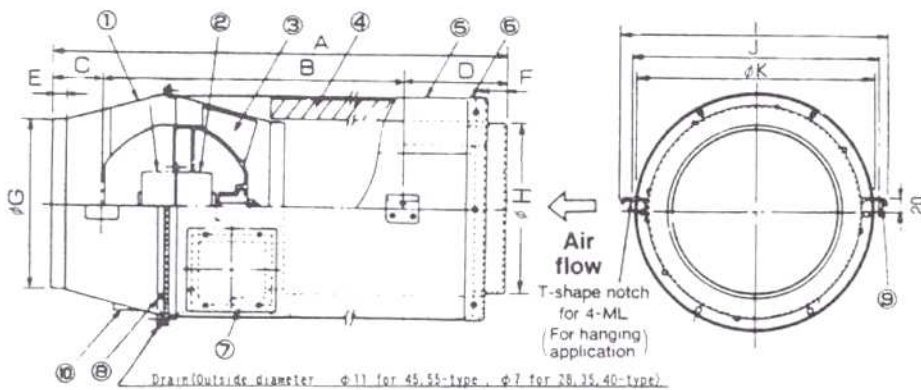
Dimensions (mm)

K25USF1



No.	Parts name	Q'ty.
1	Casing A	1
2	Casing B	1
3	Motor	1
4	Wheel	1
5	Guide vanes	4
6	Hanger fitting	4
7	Sound absorbing material	-
8	Side panel assy.	2
9	Duct assy.	2

K28USR K28USM K35USM K40USL K40UTL K40USH K40UTH
K45UST K45UTT K45USL K45UTL K45UTH K55UTL K55UTH



No	Parts name	Q'ty
1	Fan body	1
2	Motor	1
3	Wheel	1
4	Sound absorbing material	1
5	Duct assy	1
6	Side panel assy	1
7	Cover	1
8	Plastic rivet	4
9	Hanger fittings	4
10	Terminal cover	1

* Plastic rivet Qty.

Model number	A	B	C	D	E	F	G	H	I	J	K	L
K28USR, K28USM	882	600	77	205	22	30	248	249	400	366	350	8
K35USM	948	606	102	240	21.5	30	298	299	460	426	415	8
K40USL, K40UTL, K40USH, K40UTH	1049	571	137	341	26	30	347	347	525	491	480	8
K45UST, K45UTT, K45USL, K45UTL, K45UTH	1085	494	161	430	25.5	30	394	396	588	554	546	10
K55UTL, K55UTH	1232	413	231	588	25	30	445	447	673	639	631	10

Model number	Q'ty
K28DSR K28USR K28DSM K28USM K35DSM K35USM K40DSL K40USL K40DTL K40UTL K40DSH K40USH K40DTH K40UTH	8
K45DST K45UST K45DTT K45UTT K45DSL K45USL K45DTL K45UTL K45DTH K45UTH K55DTL K55UTL K55DTH K55UTH	12

3. Maintenance Cautions

Perform maintenance inspection and cleaning approximately once a year so that the fan is operated safely for a long time. It is recommended that the maintenance inspection should be conducted by the subcontractor of the electrician to prevent the fan from having any accident due to damaged parts deriving from aging and ensure long life and safe operation of the fan.

3-1 Replacement parts

Motor bearing (Supposed service life-about 20,000 hours)

The bearing service life depends on how it is used.

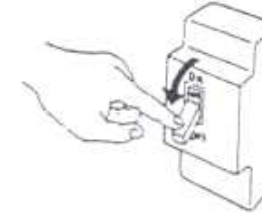
Renew the bearing every time when an abnormal sound is heard.

Model number	D end	Non-D end	Model number	D end	Non-D end
K25DSF1, K25USF1	6200Z2	6200Z2	K45DST, K45UST	6205Z2	6203Z2
K28DSR, K28USR			K45DTT, K45UTT	6204Z2	
K28DSM, K28USM			K45DSL, K45USL	6205Z2	
K35DSM, K35USM	6202Z2	6202Z2	K45DTL, K45UTL	6204Z2	
K40DSL, K40USL			K45DTH, K45UTH	6205Z2	
K40DTL, K40UTL			K55DTL, K55UTL	6204Z2	
K40DSH, K40USH			K55DTH, K55UTH	6205Z2	6204Z2
K40DTH, K40UTH					

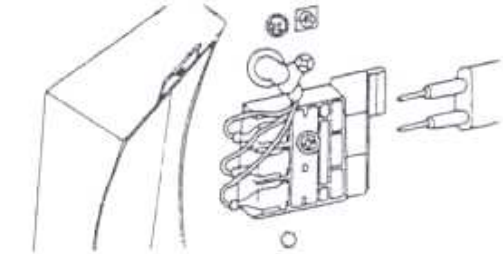
3-2 Overhauling procedure

When overhauling is necessary, like in the case when the motor has to be changed, observe the following procedure. (Be sure to wear gloves for safety)

1. Turn off the power supply switch (breaker) first.



2. Disconnect the power supply wiring. (There is no connecting terminal for K25DSF1 and K25USF1)



3. Disassemble the body into each part

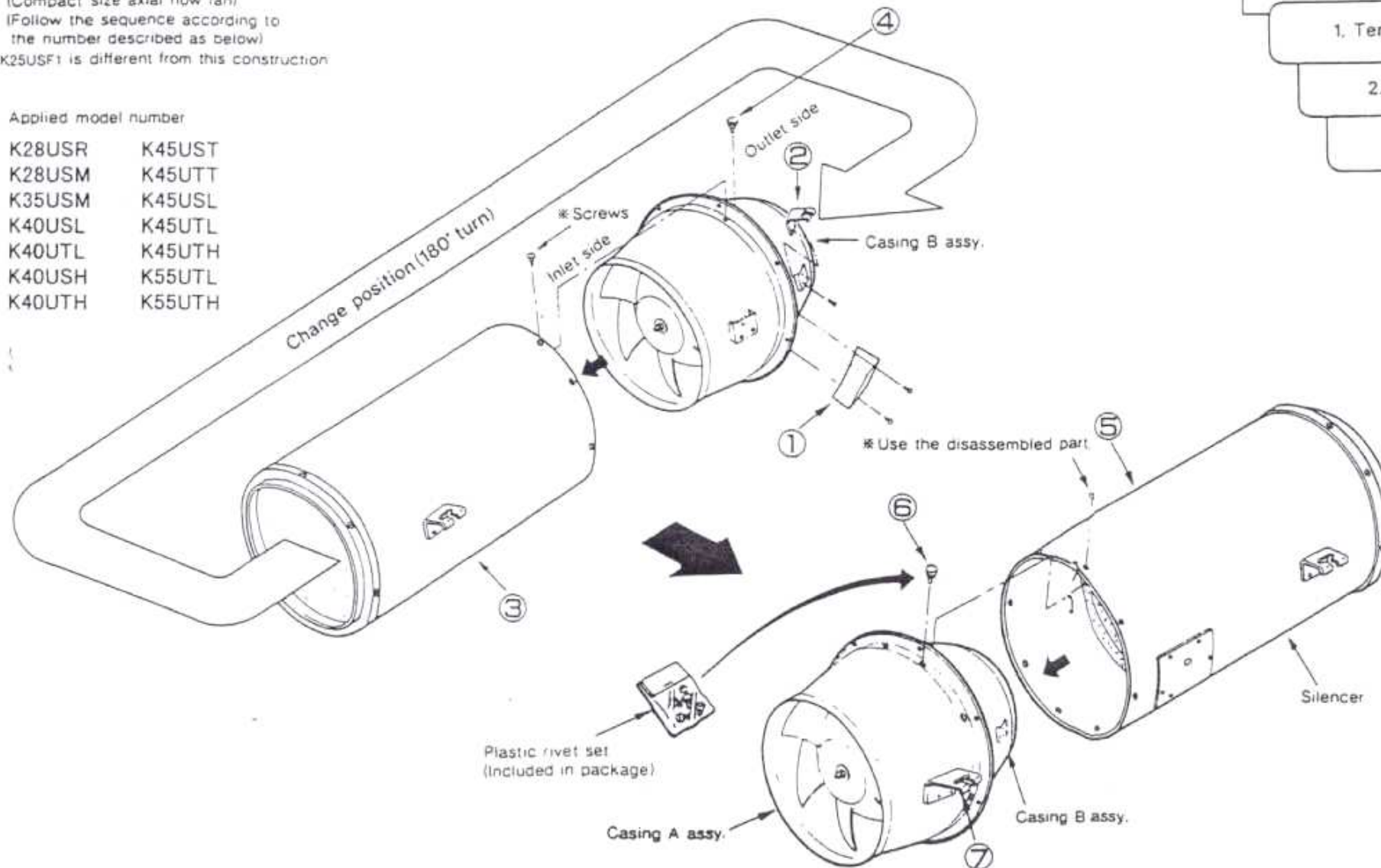
(Compact size axial flow fan)

(Follow the sequence according to the number described as below)

K25USF1 is different from this construction

Applied model number

K28USR	K45UST
K28USM	K45UTT
K35USM	K45USL
K40USL	K45UTL
K40UTL	K45UTH
K40USH	K55UTL
K40UTH	K55UTH



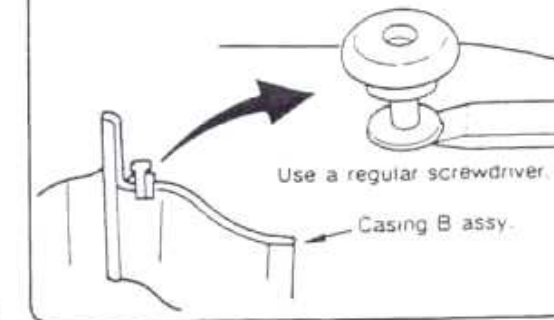
Disassemble in order

1. Terminal cover

2. Hanger fitting

3. Silencer

4. Plastic rivet



Assemble each part in order.

5. Silencer to casing B assy.

6. Plastic rivet

Plastic rivet

Hole on casing A

7. Hanger fitting

INSTALLATION INSTRUCTIONS

1. Precautions During Installation

● Check the following.

- Is there any breakage or deformation?



- Is the product as per your order?



- If any error is found, please contact the dealer you purchased from.

2. Installation

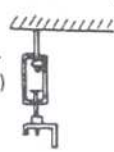
Connect the circular duct to the adaptor by taping.

Connect the rectangular duct with a flexible joint of non-flammable material such as a canvas cloth.



*Install Low noise type compact size axial flow fan according to Compact size axial flow fan.

Vibration proof rubber set (optional) can be applied.



Install the body horizontally.

Install the exterior duct in a slightly declining slope toward outer side.

Lift the body by firmly fixing it with the bolts and nuts. (to be prepared by the user.)



Air flow →

Compact size axial flow fan

Check the air direction referring to the name plate.

Install with the drain port facing down.

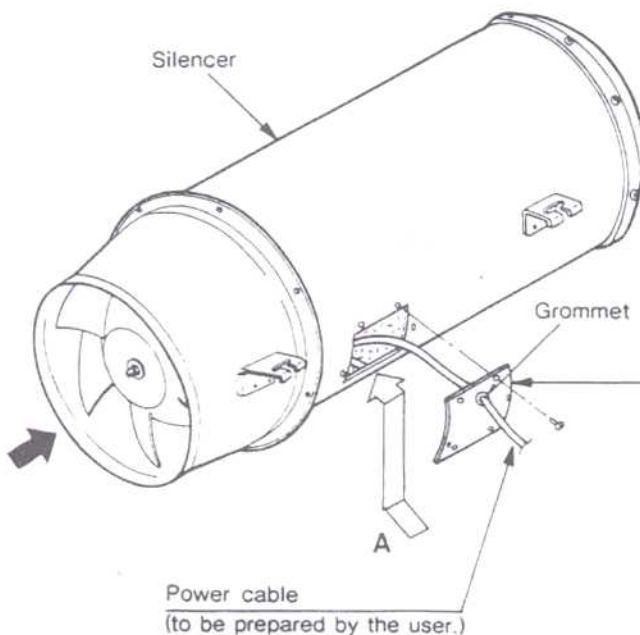


Air flow →

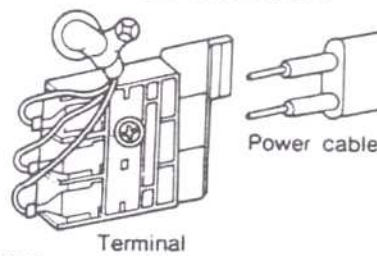
Low noise type compact size axial flow fan

Wiring Cautions (With silencer installed on the discharge side)

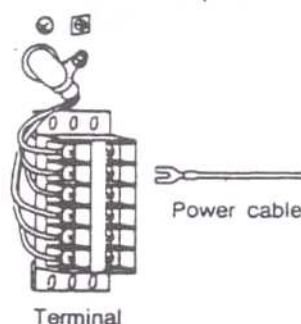
Follow the sequence according to the number described as below



A Detailed view For single phase



For three phase



1. Remove the from silencer.

2. Cut the grommet of the cover to pass the power cable through it.

3. Connect the power cable to the terminal block according to the connection diagram.

4. Tighten the cover with screws the same as it was tightened before.

*There is no connecting terminal for K25DSF1 and K25USF1

3. Electric Wiring Cautions

Ask the electrical shop for wiring.

- To the electrical shop who makes wiring.
- Kindly work in accordance with the electric equipment engineering standards and the working standard specified by the power company.
- According to the electrical installation standard, perform the grounding work.
- Connect the line after opening the terminal cover.
- Kindly connect as indicated in the following drawings.
- After wiring, check the rotation direction.
- For K55DTL and K55UTL, which do not have two-speed motor, connect the red, white and black lines to the R, S and T terminals, respectively.

